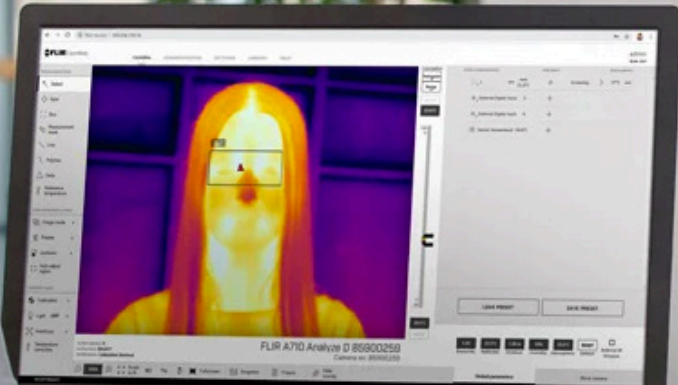


Elevated Body Temperature Check Devices For Schools

Keep Your Students & Employees Safe



In addition to elevated body temperature detection, temperature monitoring procedures have a powerful psychological effect of reassuring parents and the public that schools are safe during a virus outbreak.

■ Why measure elevated body temperature at schools?

A number of diseases are accompanied by characteristic changes in body temperature. Likewise, the course of certain diseases can be monitored by measuring body temperature, and the efficiency of a treatment initiated can be evaluated by medical professionals. Fever is the most common form of pathological elevation on body temperature and detecting fevers is generally considered a first line of defense in keeping both students and employees safe.

■ What technology is used for measuring elevated body temperature?

Thermal imaging cameras are useful and efficient tools for screening people for signs of elevated body temperature (EBT). Thermal imaging cameras cannot be used to detect or diagnose an infection. However, they can be used in public spaces such as schools as an effective tool for measuring skin surface temperature as a first step for health screening.

■ Can body temperature measuring detect a virus or an infection, like COVID-19?

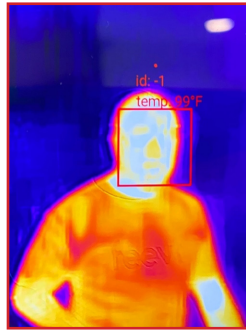
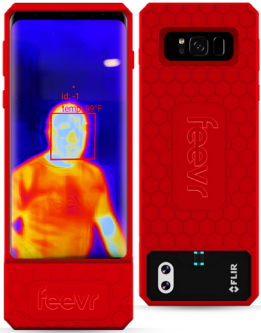
The quick answer to this question is no, elevated body temperature detection is an effective tool to measure skin surface temperature and identify individuals with Elevated Body Temperature (EBT).

Major purchase considerations

The major factors you need to consider before you make a decision to purchase EBT devices are:

- **How many units do you need?**
- **Do you need stationary or mobile units?**
- **Will staff monitor cameras in person or remotely?**
- **What type of alert features do you need?**
- **What is our timeline for having an EBT solution in place?**
- **What are your State's pandemic guidelines?**

Elevated Body Temperature Device Solutions



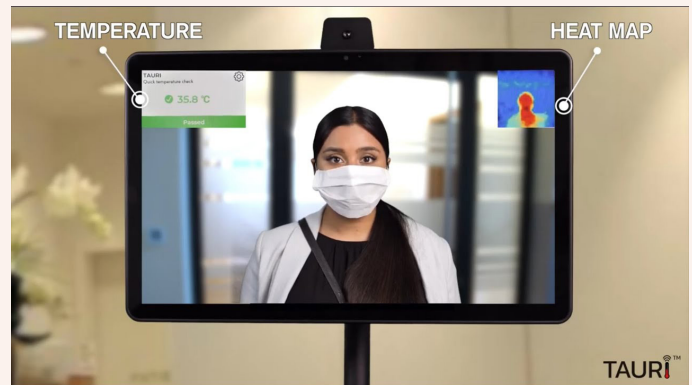
FEEVR is a mobile phone sized device that enables the user to identify individuals with a possible fever, efficiently and effectively from a safe distance, without making direct body contact, minimizing the risk of cross-contamination of infectious disease. Format: Mobile, smartphone sized device, with temperature sensing attachment and tripod.

[VIDEO DEMO FEEVR Technology](#)

TAURI™

TAURI Temperature Check Tablets (patent pending) comes in 3 sizes: 10, 15 & 21" screens. TAURI scans using infrared thermal technology and can detect facial temperature of one person at a time passing through the detection area - the sensor will measure the person's surface/skin temperature in 1 second with accuracy/tolerance of 0.3 degrees Celsius.

[VIDEO DEMO TAURI Temperature Check Tablet](#)



Meridian's Personnel Management Solution features check-in and temperature verification capabilities. The solution can also be programmed for facial identification, with users easily added in a few short clicks. Alarms can be added to sound when those above the temperature threshold and those without access attempt to enter. Format: Mobile, smartphone sized device with temperature sensing attachment with stand.

[VIDEO DEMO Meridian Kiosks | Personnel Management Solution](#)



FLIR thermal cameras have been used in public spaces as an effective tool to measure skin surface temperature and identify individuals with Elevated Body Temperature (EBT). If the temperature of the skin in key areas is above average temperature, then the individual may be selected for additional screening. Format: Proprietary mobile & permanent camera equipment.

[VIDEO DEMO How to Screen EBT Using a FLIR Thermal Camera](#)

